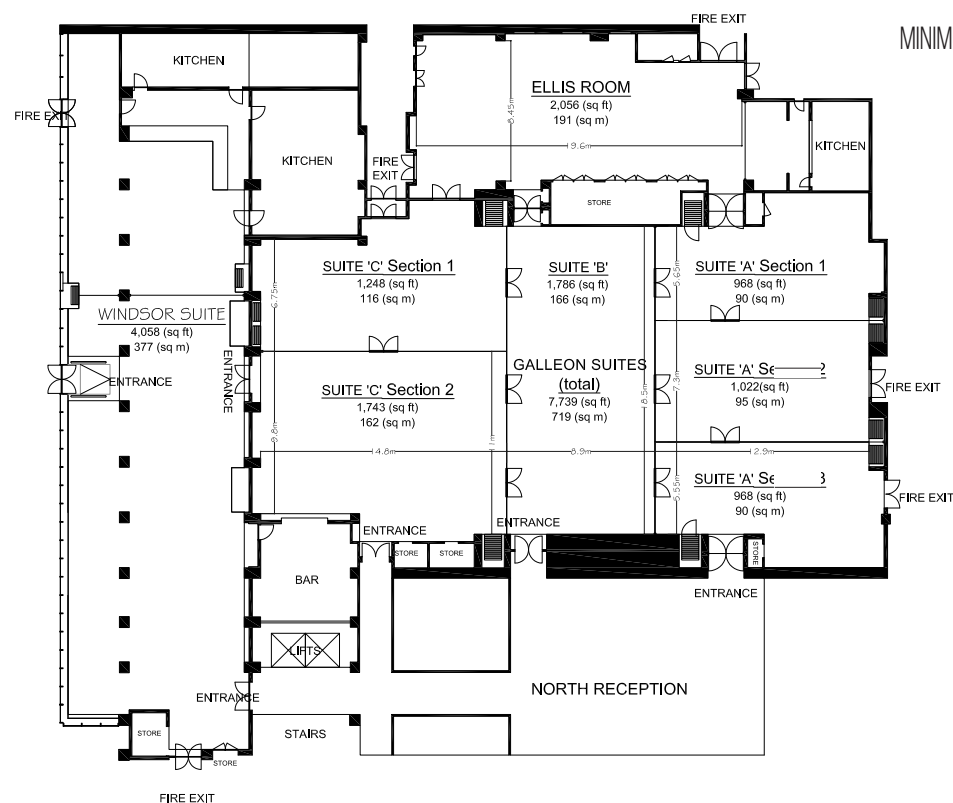
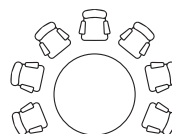


GALLEON SUITE

AT THE ROYAL NATIONAL HOTEL



CABARET LAYOUT:
MINIMUM 8 PEOPLE PER TABLE



DINNER 630 - DINNER DANCE 550
THEATRE STYLE 715

ROOM DIMENSIONS

Floor Space: 719 SQ.MT

Ceiling Height: 4m

Dance Floor Size: 9.88m x 9.88m

Stage Size: 1.83m L x 1.22m W x 0.46 H

SPECIAL FEATURES

- Private drinks reception area in the Windsor Suite
- Private bar in the room
- Six large crystal chandeliers
- Air conditioning
- Acoustic partitions
- No Columns
- Underground car park

